

<b>ELECTRICAL</b>	
Terminals	54
Tools	59
Heat Shrink	60
Insulation Tape	63
Auto Cable	64
Battery Terminals & Straps	67
Cable Ties	70
Clips & Grommets	73
Fuses	76
Testers	81
Torches & Lanterns	83
Batteries	88
Auto Bulbs	90
Plugs, Sockets & Switches	105

# ELECTRICAL

**Female Spade Terminals**

- \*For small speaker
- \*\*For speaker/headlight
- † For dynamo

Part No	Qty	Colour	Fits tab
205113	100	Red*	2.8 mm

Part No	Qty	Colour	Fits tab
205111	100	Red**	4.8 mm

Part No	Qty	Colour	Fits tab
205112	100	Blue	4.8 mm

Part No	Qty	Colour	Fits tab
205102	100	Red	6.3 mm

Part No	Qty	Colour	Fits tab
205105	100	Blue	6.3 mm
205205	300	Blue	6.3 mm

Part No	Qty	Colour	Fits tab
205108	50	Yellow	6.3 mm

Part No	Qty	Colour	Fits tab
205101	50	Yellow†	9.5 mm

**Male Blade Terminals**

Part No	Qty	Colour	Tab
205192	100	Red	2.3 mm

Part No	Qty	Colour	Tab
205153	100	Blue	2.3 mm

Part No	Qty	Colour	Tab
205104	100	Red	6.3 mm

Part No	Qty	Colour	Tab
205107	100	Blue	6.3 mm
205207	300	Blue	6.3 mm
205325	1000	Blue	6.3 mm

Part No	Qty	Colour	Tab
205110	50	Yellow	6.3 mm

**Female Spade Terminals Fully Insulated**

Part No	Qty	Colour	Fits tab
205193	100	Red	2.8 mm

Part No	Qty	Colour	Fits tab
205191	100	Red	4.8 mm

Part No	Qty	Colour	Fits tab
205196	100	Blue	4.8 mm

Part No	Qty	Colour	Fits tab
205103	100	Red	6.3 mm

Part No	Qty	Colour	Fits tab
205106	100	Blue	6.3 mm
205206	200	Blue	6.3 mm
205320	1000	Blue	6.3 mm

Part No	Qty	Colour	Fits tab
205109	50	Yellow	6.3 mm

Part No	Qty	Colour	Fits tab
205296	50	Yellow	9.5 mm

**Male Blade Terminals Fully Insulated**

Part No	Qty	Colour	Tab
205197	100	Blue	6.3 mm

**Male Piggy-Back Terminals**

Part No	Qty	Colour	Fits tab
205114	100	Red	6.3 mm

Part No	Qty	Colour	Fits tab
205115	100	Blue	6.3 mm

**Fork Terminals**

Part No	Qty	Colour	Size
205116	100	Red	3.7 mm (4BA)

Part No	Qty	Colour	Size
205118	100	Blue	3.7 mm (4BA)

Part No	Qty	Colour	Size
205297	50	Yellow	4.0 mm

Part No	Qty	Colour	Size
205120	100	Red	5.3 mm (2BA)

Part No	Qty	Colour	Size
205121	100	Blue	5.3 mm (2BA)

Part No	Qty	Colour	Size
205123	100	Blue	6.4 mm (0BA)

**Female Receptacle Sockets**

- Fits 4.0 mm bullets

Part No	Qty	Colour
205141	100	Red

- Fits 5.0 mm bullets

Part No	Qty	Colour
205143	100	Blue
205243	200	Blue

**Sleeve Terminals**

- Single

Part No	Qty	Colour
205154	100	Black

- Double

Part No	Qty	Colour
205155	100	Black

**Pin Connectors**

Part No	Qty	Colour	Diameter
205145	100	Red	1.9 mm

Part No	Qty	Colour	Diameter
205146	100	Blue	1.9 mm

Part No	Qty	Colour	Diameter
205147	50	Yellow	2.9 mm

**Butt Connectors Standard**

Part No	Qty	Colour
205148	100	Red
205330	1000	Red

Part No	Qty	Colour
205149	100	Blue
205249	200	Blue
205335	1000	Blue

Part No	Qty	Colour
205150	50	Yellow

**Male Bullet Terminals**

Part No	Qty	Colour	Size
205142	100	Red	4.0 mm

Part No	Qty	Colour	Size
205144	100	Blue	5.0 mm
205244	200	Blue	5.0 mm



Ring Terminals

Part No	Qty	Colour	Size
205124	100	Red	3.2 mm (6BA)



Part No	Qty	Size	Colour
205134	100	6.4 mm (0BA)	Blue



Part No	Qty	Colour	Size
205125	100	Blue	3.2 mm (6BA)



Part No	Qty	Size	Colour
205135	50	6.4 mm (0BA)	Yellow



Part No	Qty	Colour	Size
205127	100	Red	3.7 mm (4BA)



Part No	Qty	Size	Colour
205136	100	8.4 mm (5/16")	Red



Part No	Qty	Colour	Size
205128	100	Blue	3.7 mm (4BA)



Part No	Qty	Size	Colour
205137	100	8.4 mm (5/16")	Blue



Part No	Qty	Colour	Size
205129	50	Yellow	3.7 mm (4BA)



Part No	Qty	Size	Colour
205138	50	8.4 mm (5/16")	Yellow



Part No	Qty	Colour	Size
205130	100	Red	5.3 mm (2BA)



Part No	Qty	Size	Colour
205194	100	10.5 mm (3/8")	Red



Part No	Qty	Colour	Size
205131	100	Blue	5.3 mm (2BA)
205231	200	Blue	5.3 mm (2BA)



Part No	Qty	Size	Colour
205139	100	10.5 mm (3/8")	Blue



Part No	Qty	Colour	Size
205132	50	Yellow	5.3 mm (2BA)



Part No	Qty	Size	Colour
205140	50	10.5 mm (3/8")	Yellow



Part No	Qty	Colour	Size
205133	100	Red	6.4 mm (0BA)



Part No	Qty	Size	Colour
205298	50	13.0 mm (1/2")	Blue
205299	50	13.0 mm (1/2")	Yellow



Brass Bullets

- Solderless

Part No	Qty	Diameter
205156	200	4.6 mm



LUCAR Terminals

- Standard female spade

Part No	Qty	Size
205292	200	6.3 mm



Wire Connectors

- Closed end

Part No	Qty
205152	100



- Spade cover

Part No	Qty	Size
205293	200	6.3 mm



Assorted Terminals

- Contains:  
 Female Spades  
 Fully Insulated Female Spades  
 Male Blades  
 Male Piggy-Backs  
 Rings  
 Male Bullets  
 Female Receptacle Sockets  
 Standard Butt Connectors  
 Scotchlocks  
 Splice Connectors



Part No	Qty
105303	655

'Push On' Terminals

Pre-insulated

- Contains:  
 Female Spades  
 Fully Insulated Female Spades  
 Male Blades  
 Male Piggy-Backs  
 Rings  
 Male Bullets  
 Female Receptacle Sockets  
 Standard Butt Connectors



Part No	Qty
105165	200

Insulated Terminals

Red, Blue & Yellow

- Contains:  
 Female Spades  
 Fully Insulated Female Spades  
 Male Blades  
 Male Piggy-Backs  
 Rings & Forks  
 Male Bullets  
 Female Receptacle Sockets  
 Standard Butt Connectors



Part No	Qty
105253	300

Insulated Terminals

Blue

- Contains:  
 Female Spades  
 Fully Insulated Female Spades  
 Male Blades  
 Male Piggy-Backs  
 Rings  
 Male Bullets  
 Female Receptacle Sockets  
 Standard Butt Connectors



Part No	Qty
105231	280

Ring & Fork Terminals

Pre-insulated

- Rings:  
 3.2 mm (Red, Blue)  
 3.7 mm (Red, Blue)  
 5.3 mm (Red, Blue, Yellow)  
 6.4 mm (Blue, Yellow)  
 8.4 mm (Blue, Yellow)  
 10.5 mm (Yellow).  
 Forks:  
 3.7 mm (Red, Blue), 5.3 mm (Red, Blue)



Part No	Qty
105164	200

Insulated Terminals & Crimping Tool

Red & Blue

- Contains:  
 Female Spades  
 Male Blades  
 Male Piggy-Backs  
 Rings  
 Male Bullets  
 Female Receptacle Sockets  
 Standard Butt Connectors  
 Crimping Tool



Part No	Qty
105254	206

Insulated Terminals

Red

- Contains:  
 Female Spades  
 Fully Insulated Female Spades  
 Male Blades  
 Male Piggy-Backs  
 Rings  
 Male Bullets  
 Female Receptacle Sockets  
 Standard Butt Connectors



Part No	Qty
105230	260

Insulated Terminals

Yellow

- Contains:  
 Female Spades  
 Fully Insulated Female Spades  
 Male Blades  
 Rings  
 Standard Butt Connectors



Part No	Qty
105232	110

### Splice Connectors 'Snap-Locking'

- Self Stripping blade fuse holder

Part No	Qty	Size	Colour
235308	20	1.0 - 2.0 mm <sup>2</sup>	Blue



Part No	Qty	Size	Colour
205162	100	0.8 - 2.0 mm <sup>2</sup>	Red



Part No	Qty	Size	Colour
205169	100	1.0 - 1.5 mm <sup>2</sup>	Blue
205168	500	1.0 - 1.5 mm <sup>2</sup>	Blue



### Piano Key Connectors

#### Quick Release



Part No	Type	Qty
205310	3 Pole	10
205312	5 Pole	10

Part No	Qty	Amperage	Cable Diameter
205215	10	3 amp	4 mm <sup>2</sup>
205216	10	5 amp	6 mm <sup>2</sup>
205217	10	15 amp	10 mm <sup>2</sup>
205218	10	30 amp	16 mm <sup>2</sup>

#### Assorted Pack

Sizes:  
3 - 30 amp



Part No	Qty
110134	20

#### Assorted Pack

Sizes:  
40 x 3 pole  
30 x 5 pole



Part No	Qty
105229	70

### Cold Seal Splices

- Tin plated copper
- One stop termination
- No heating required



Part No	Qty	Size	Colour
205094	10	1.5 mm	Red
205096	10	2.5 mm	Blue
205098	10	6.0 mm	Yellow

### Solder Butt Connectors

#### Adhesive lined

- Heat-shrinkable splices
- Pre-fluxed solder



Part No	Qty	Size	Colour
205171	10	0.25 mm - 0.5 mm	Clear
205170	10	0.5 mm - 1.5 mm	Red
205172	10	1.5 mm - 2.5 mm	Blue
205173	10	4 mm - 6 mm	Yellow

### 'Scotchloks'

- No. 560



Part No	Qty	Size	Colour
205161	100	1.0 - 2.0 mm <sup>2</sup>	Blue

### Connector Strips

- 12 per strip



### Heavy Duty Crimping Tool

- Crimping pliers & wire stripper
- Insulated handles



Part No	Qty
295157	1 Pair

### Ratchet Crimping Pliers

- Ergonomic design
- 0.5 mm - 6mm pre-insulated terminals
- Length: 250 mm



Part No	Qty
295178	1 Pair

### Ratchet Crimping Pliers

- With insulated handles



Part No	Qty
295161	1 Pair

### Wire Stripper & Cutting Tool

- Automatic action



Part No	Qty
295324	1 Pair

### Unistripper Tool

- Fast action crimper & wire stripper
- Insulated handles



Part No	Qty
295162	1 Pair

### Hex Mechanical Crimping Tools

- Revolving hexagonal crimp dies
- Insulated grip handles



Part No	Qty	Size
295170	1	6 - 50 mm <sup>2</sup>
295171	1	6 - 120 mm <sup>2</sup>
295172	1	25 - 150 mm <sup>2</sup>

**Blue Heat Shrink Terminals (Adhesive Lined)**

**Butt Connectors**

Part No	Qty
205166	25
205345	100

**Ring Terminals**

Part No	Qty	Size
205711	25	4.0 mm

Part No	Qty	Size
205712	25	5.0 mm

Part No	Qty	Size
205713	25	6.0 mm

Part No	Qty	Size
205714	25	8.0 mm

**Fork Terminals**

Part No	Qty	Size
205715	25	4.0 mm

Part No	Qty	Size
205716	25	5.0 mm

**Female Spade Terminals**

Part No	Qty	Size
205717	25	6.3 mm

**Male Blade Terminals**

Part No	Qty	Size
205718	25	6.3 mm

**Red Heat Shrink Terminals (Adhesive Lined)**

**Butt Connectors**

Part No	Qty
205165	25
205340	100

**Ring Terminals**

Part No	Qty	Size
205701	25	4.0 mm

Part No	Qty	Size
205702	25	5.0 mm

Part No	Qty	Size
205703	25	6.0 mm

**Fork Terminals**

Part No	Qty	Size
205704	25	4.0 mm

Part No	Qty	Size
205705	25	5.0 mm

**Female Spade Terminals**

Part No	Qty	Size
205706	25	6.3 mm

**Male Blade Terminals**

Part No	Qty	Size
205707	25	6.3 mm

**Yellow Heat Shrink Terminals (Adhesive Lined)**

**Butt Connectors**

Part No	Qty
205167	10

**Ring Terminals**

Part No	Qty	Size
205721	25	4.0 mm

Part No	Qty	Size
205722	25	5.0 mm

Part No	Qty	Size
205723	25	6.0 mm

Part No	Qty	Size
205724	25	8.0 mm

Part No	Qty	Size
205725	25	10.0 mm

**Fork Terminals**

Part No	Qty	Size
205726	25	4.0 mm

Part No	Qty	Size
205727	25	5.0 mm

Part No	Qty	Size
205728	25	6.0 mm

**Female Spade Terminals**

Part No	Qty	Size
205729	25	6.3 mm

**Male Blade Terminals**

Part No	Qty	Size
205730	25	6.3 mm

**Heat Shrink Terminals Adhesive Lined**

Contains:  
 Female Spades  
 Male Blades  
 Rings  
 Forks  
 Standard Butt Connectors



Part No	Qty
105210	100

**Heat Shrink Tubing Yellow**

- Polyolefin
- Shrink ratio of 2:1



Part No	Qty	Length	Diameter
205253	100	50 mm	3.2 mm
205257	100	50 mm	4.8 mm
205273	25	200 mm	4.8 mm
205261	100	50 mm	6.4 mm
205277	20	200 mm	6.4 mm
205281	15	200 mm	9.5 mm
205265	50	70 mm	12.7 mm
205285	10	200 mm	12.7 mm

**Heat Shrink Tubing Blue**

- Polyolefin
- Shrink ratio of 2:1



Part No	Qty	Length	Diameter
205254	100	50 mm	3.2 mm
205258	100	50 mm	4.8 mm
205274	25	200 mm	4.8 mm
205262	100	50 mm	6.4 mm
205278	20	200 mm	6.4 mm
205282	15	200 mm	9.5 mm
205266	50	70 mm	12.7 mm
205402	1 Roll	10 m	3.2 mm
205405	1 Roll	10 m	4.8 mm
205408	1 Roll	10 m	6.4 mm

**Heat Shrink Tubing**

**Red**

- Polyolefin
- Shrink ratio of 2:1



Part No	Qty	Length	Diameter
205252	100	50 mm	3.2 mm
205256	100	50 mm	4.8 mm
205271	25	200 mm	4.8 mm
205260	100	50 mm	6.4 mm
205275	20	200 mm	6.4 mm
205279	15	200 mm	9.5 mm
205264	50	70 mm	12.7 mm
205283	10	200 mm	12.7 mm
205403	1 Roll	10 m	3.2 mm
205406	1 Roll	10 m	4.8 mm
205409	1 Roll	10 m	6.4 mm

**Heat Shrink Tubing**  
50 & 70 mm Lengths



**Sizes:**  
3.2, 4.8, 6.4 x 50 mm  
12.7 x 70 mm  
(diameter x length)  
**Colours:**  
Black, Blue, Red, Yellow



Part No	Qty
105186	160

**Heat Shrink Tubing**

**Black**

- Polyolefin
- Shrink ratio of 2:1



Part No	Qty	Length	Diameter
205251	100	50 mm	3.2 mm
205255	100	50 mm	4.8 mm
205272	25	200 mm	4.8 mm
205259	100	50 mm	6.4 mm
205276	20	200 mm	6.4 mm
205280	15	200 mm	9.5 mm
205263	50	70 mm	12.7 mm
205284	10	200 mm	12.7 mm
205401	1 Roll	10 m	3.2 mm
205404	1 Roll	10 m	4.8 mm
205407	1 Roll	10 m	6.4 mm
205410	1 Roll	10 m	9.5 mm
205411	1 Roll	10 m	12.7 mm
205412	1 Roll	10 m	25.0 mm

**Heat Shrink Tubing**  
200 mm Lengths



**Sizes:**  
4.8, 6.4, 9.5, 12.7 mm (diameter)  
**Colours:**  
Black, Blue, Red, Yellow



Part No	Qty
105181	30

**Heat Shrink Tubing**  
200 mm Lengths

- Polyolefin shrink ratio 2:1

**Sizes:**  
4.8 mm  
**Colours:**  
Black, Blue, Red, Yellow



Part No	Qty
110138	48

**PVC Insulation Tape**

**'AT7'**

- Flame retardant
- 19 mm x 20 m Rolls



Part No	Qty	Colour
225291	10	Black
225273	10	Blue
225292	10	Brown
225272	10	Green/Yellow Stripe
225276	10	Grey
225275	10	Red
225271	10	White
225274	10	Yellow

**Assorted Pack**

**Colours:**  
White, Blue, Yellow,  
Red, Grey, Brown,  
Green/Yellow Stripe



Part No	Qty
110195	10

**PVC Insulation Tape**

**NITTO '21'**

- 19 mm x 20 m Rolls

Part No	Colour	Qty
225277	Black	10
225289	Black (Bonus Pack)	120

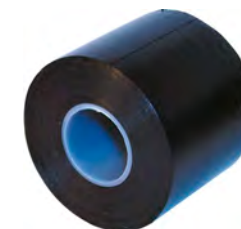


**PVC Insulation Tape**

**2" Wide**

- 50 mm x 20 m Rolls

Part No	Qty	Colour
225288	3	Black



**PVC Insulation Tape**

**High Quality**

- Flame retardant
- 19 mm x 20 m Rolls



Part No	Qty	Colour
225279	10	Black
225278	50	Black
225282	10	Blue
225286	10	Brown
225283	10	Green
225287	10	Green/Yellow Stripe
225290	10	Grey
225281	10	Red
225285	10	White
225284	10	Yellow

**Assorted Pack**

**High Quality**

- Flame retardant
- 19 mm x 20 m rolls

**Colours:**  
Blue, Green, Red, White, Yellow



Part No	Qty
225280	10

**Nitto**

**Auto Cable**

**1 mm<sup>2</sup> Single Core**

- 14/030
- **Standard:** 8.75 amp
- **Thin Wall:** 16.50 amp



Part No	Length	Colour	Type
215167	50 m	Black	Standard
215168	50 m	Blue	Standard
215171	50 m	Brown	Standard
215169	50 m	Green	Standard
215187	50 m	Purple	Standard
215166	50 m	Red	Standard
215172	50 m	White	Standard
215170	50 m	Yellow	Standard
215120	50 m	Black	Thin Wall
215121	50 m	Blue	Thin Wall
215122	50 m	Brown	Thin Wall
215123	50 m	Green	Thin Wall
215124	50 m	Purple	Thin Wall
215125	50 m	Red	Thin Wall
215126	50 m	White	Thin Wall
215127	50 m	Yellow	Thin Wall

**Auto Cable**

**2 mm<sup>2</sup> Single Core**

- 28/030
- **Standard:** 17.50 amp
- **Thin Wall:** 25 amp



Part No	Length	Colour	Type
215174	50 m	Black	Standard
215175	50 m	Blue	Standard
215178	50 m	Brown	Standard
215176	50 m	Green	Standard
215190	50 m	Purple	Standard
215173	50 m	Red	Standard
215179	50 m	White	Standard
215177	50 m	Yellow	Standard
215128	50 m	Black	Thin Wall
215129	50 m	Blue	Thin Wall
215130	50 m	Brown	Thin Wall
215131	50 m	Green	Thin Wall
215132	50 m	Purple	Thin Wall
215157	50 m	Red	Thin Wall
215158	50 m	White	Thin Wall
215159	50 m	Yellow	Thin Wall

**Auto Cable**

**3 mm<sup>2</sup> Single Core**

- 44/030
- **Standard:** 27.50 amp
- **Thin Wall:** 33 amp



Part No	Length	Colour	Type
215192	30 m	Black	Standard
215193	30 m	Brown	Standard
215180	30 m	Red	Standard
215160	30 m	Black	Thin Wall
215161	30 m	Brown	Thin Wall
215162	30 m	Red	Thin Wall

**Auto Cable**

**4 mm<sup>2</sup> Single Core**

- 65/030
- **Standard:** 35 amp
- **Thin Wall:** 42 amp



Part No	Length	Colour	Type
215196	30 m	Black	Standard
215197	30 m	Brown	Standard
215181	30 m	Red	Standard
215039	30 m	Black	Thin Wall
215040	30 m	Brown	Thin Wall
215038	30 m	Red	Thin Wall

**Auto Cable**

**1 mm<sup>2</sup> Twin Core**

- 2 x 14/030
- **Standard:** 8.75 amp
- **Thin Wall:** 16.5 amp



Part No	Length	Outer Colour	Inner Colour	Type
215182	30 m	Black	Red & Black	Standard
215199	100 m	Black	Red & Black	Standard
215045	30 m	Black	Red & Black	Thin Wall
215046	100 m	Black	Red & Black	Thin Wall

**Auto Cable**

**2 mm<sup>2</sup> Twin Core**

- 2 x 28/030
- **Standard:** 17.50 amp
- **Thin Wall:** 25 amp



Part No	Length	Outer Colour	Inner Colour	Type
215183	30 m	Black	Red & Black	Standard
215191	100 m	Black	Red & Black	Standard
215047	30 m	Black	Red & Black	Thin Wall
215048	100 m	Black	Red & Black	Thin Wall

**Stereo Speaker Cable**

**0.4 mm<sup>2</sup> Twin Core**

- 44/030
- 2 amp



Part No	Length	Colour
215185	30 m	Black (with white stripe)
215184	100 m	Black (with white stripe)

**Mains Cable**

**3 Core**

- White PVC
- 6 amp



Part No	Size	Length
215268	0.75 mm <sup>2</sup>	30 m
215269	1.00 mm <sup>2</sup>	30 m
215262	1.50 mm <sup>2</sup>	30 m

**Mains Cable**

**3 Core - Black Rubber**

- Tough rubber sheathed (TRS)
- 6 amp



Part No	Size	Length
215270	0.75 mm <sup>2</sup>	30 m
215263	0.75 mm <sup>2</sup>	50 m
215266	1.00 mm <sup>2</sup>	30 m
215267	1.50 mm <sup>2</sup>	30 m

**Artic Cable**

**3 Core**

- Yellow PVC covered
- 100v



Part No	Size	Length
215273	1.50 mm <sup>2</sup>	100 m
215274	2.5 mm <sup>2</sup>	100 m

**Auto Cable**

**4 Core**

- Black PVC covered
- 5.75 amp



Part No	Size	Length
215200	0.65 mm <sup>2</sup>	30 m

**Auto Cable**

**5 Core**

- Black PVC covered
- 8.75 amp



Part No	Size	Length
215201	1.00 mm <sup>2</sup>	30 m

**INCREDIBLE RANGE OF ASSORTMENT BOXES**

Electrical, Washers, 'O' Rings, Screws & Fixings, Hardware and Tyre Care to mention a few.

From page 8

**Cable For Trailers**  
7 Core

- 5.75 amp



Part No	Size	Length
215221	1.00 mm <sup>2</sup>	30 m

**Cable For Trailers**  
7 Core

- 6 x 8.75 amp
- 1 x 17.5 amp



Part No	Size	Length
215209	6 x 1.00 mm <sup>2</sup> & 1 x 2.00 mm <sup>2</sup>	30 m

**Cable For Trailers**  
7 Core

- 7 x 24/0.20
- 14 amp



Part No	Size	Length
215080	0.65 mm <sup>2</sup>	30 m

**Pipe / Cable Spiral Binding**  
Black

- Suitable for wiring
- Polythene



Part No	Length	Diameter	Colour
295501	30 m	1.6 - 12.7 mm <sup>2</sup>	Black
295502	30 m	4.8 - 50 mm <sup>2</sup>	Black
295503	30 m	9.5 - 100 mm <sup>2</sup>	Black

**Welding Cable**

- Flexible



Part No	Size	Length	Colour
215271	16 mm <sup>2</sup>	10 m	Black

**Split Conduit**

- Nylon



Part No	Pack Qty	Size	Length
295245	1 roll	6.9 mm	25 m
295246	1 roll	10.7 mm	10 m

**Copper HT Cable**

- 16/030



Part No	Length	Colour
215272	30 m	Black

**Earth Cable**  
Light Duty



Part No	Size	Length	Type
215237	25 mm <sup>2</sup>	10 m	Braided

**Starter Cable**  
Light Duty

- 322/0.30
- Suits 12v



**Starter Cable**  
Heavy Duty

- 61/113
- Suits 24v



Part No	Size	Length	Colour	Part No	Size	Length	Colour
215232	25 mm <sup>2</sup>	10 m	Black	215233	60 mm <sup>2</sup>	10 m	Black
215231	25 mm <sup>2</sup>	10 m	Red	215234	60 mm <sup>2</sup>	10 m	Red

**Starter Cable**



Part No	Size	Length	Colour
215235	35 mm <sup>2</sup>	10 m	Black
215238	35 mm <sup>2</sup>	10 m	Red
215236	50 mm <sup>2</sup>	10 m	Black
215239	50 mm <sup>2</sup>	10 m	Red

**Battery Retaining Bracket Set**

- Universal fitting stays & nuts
- Zinc plated



Part No	Qty
295227	5 Sets

**Battery Terminal Nuts & Bolts**

- Square head bolts & hex nuts
- Zinc plated



Part No	Qty	Size
205247	2 Pairs	5/16" UNC x 1 1/4"

**Crocodile Clips**

- Zinc plated



Part No	Qty	Amperage
255218	24	5 amp

Part No	Qty	Amperage
255219	25	25 amp

Part No	Qty	Amperage
255220	25	50 amp

**Copper Tube Terminals**  
Cable Lugs

- 35 mm<sup>2</sup> Cable Entry suits Light Duty Starter Cable
- 70 mm<sup>2</sup> Cable Entry suits Heavy Duty Starter Cable



Part No	Qty	Cable Entry	Stud
205178	20	10 mm <sup>2</sup>	8 mm
205238	20	16 mm <sup>2</sup>	8 mm
205234	20	25 mm <sup>2</sup>	6 mm
205235	20	25 mm <sup>2</sup>	8 mm
205236	20	25 mm <sup>2</sup>	10 mm
205181	10	35 mm <sup>2</sup>	8 mm
205182	10	35 mm <sup>2</sup>	10 mm
205183	10	35 mm <sup>2</sup>	12 mm
205184	10	50 mm <sup>2</sup>	8 mm
205185	10	50 mm <sup>2</sup>	10 mm
205189	10	50 mm <sup>2</sup>	12 mm
205237	10	70 mm <sup>2</sup>	10 mm
205186	10	70 mm <sup>2</sup>	12 mm
205187	10	95 mm <sup>2</sup>	16 mm
205188	10	120 mm <sup>2</sup>	14 mm

**Assorted Box**

Sizes:  
10 - 70 mm<sup>2</sup>



Part No	Qty
105227	80

**Jump Lead Handles**

- Insulated plastic
- 100 amp



Part No	Qty	Colour
295222	2 Pairs	Red & Black



**Battery Terminals**  
Light Duty

- Zinc plated brass



Part No	Qty	Voltage	Type
205211	1	12v	Positive
205212	1	12v	Negative
205223	10	12v	Positive
205224	10	12v	Negative

**Heavy Duty**

- Zinc plated brass



Part No	Qty	Voltage	Type
205225	10	24v	Positive
205226	10	24v	Negative

**Commercial**

- Extra heavy duty



Part No	Qty	Voltage	Type
205227	5	24v	Positive
205228	5	24v	Negative

**Cargo Post**

- Heavy duty commercial type



Part No	Qty	Voltage	Type
205240	5	24v	Positive
205241	5	24v	Negative

**Battery Booster Cables**

**General Use**

- Red & Black cables
- Supplied in a handy storage bag



Part No	Qty	Length	Amperage
295250	1 Set	3.0 m	200 amp
295252	1 Set	3.0 m	400 amp
295254	1 Set	4.0 m	700 amp

**Battery Booster Cables**

**Heavy Duty**

- Red & Black cables
  - Heavy duty copper cable fitted with electroplated clips
- Suitable for 12 / 24v cars & light commercial vehicles



Part No	Qty	Length	Diameter	Amperage
295231	1 Set	3.5 m	16 mm <sup>2</sup>	400 amp
295229	1 Set	5.0 m	16 mm <sup>2</sup>	400 amp
295236	1 Set	3.5 m	25 mm <sup>2</sup>	600 amp
295240	1 Set	5.0 m	35 mm <sup>2</sup>	750 amp
295239	1 Set	7.5 m	50 mm <sup>2</sup>	900 amp

**Battery Acid Tester**

- For checking specific gravity of battery fluid



Part No	Qty
295230	1

**Battery Clamps**

**Quick Release**

Quick release terminals designed to be fitted onto a battery or removed without the use of tools



Part No	Qty	Colour
205232	1	Red & Blue

**Battery Isolator Switch & Cover**

- 100 amps continuous
- 500 amps for 5 seconds



Part No	Qty	Part No	Qty	Amperage	Voltage
295208	2 Piece Set	295218	1	40 amp	12v

**High Current Connectors**

High powered connectors are ideal for external battery / charging connections



Part No	Qty	Amperage	Colour	Part No	Qty	Length	Voltage
295219	1	175 amp	Grey	295461	2	12"	12v
295220	1	350 amp	Grey	295462	2	18"	12v

**Earth Straps**  
Heavy Duty

- Terminal & ring ends
- Braided



**Earth Straps**  
Light Duty

- Terminal & ring ends
- Braided



Part No	Qty	Length	Voltage	Part No	Qty	Length	Voltage
295453	2	12"	24v	295451	2	12"	12v
295454	2	18"	24v	295452	2	18"	12v

**Battery To Starter Cables**  
Black

- Battery to starter terminal / spade
- 37/0.71 mm
- 16 mm<sup>2</sup> copper cable
- PVC insulated



**Engine To Earth Cables**

- Braided engine to earth cables
- Spade to spade
- 19 mm<sup>2</sup> copper cable



Part No	Qty	Length	Part No	Qty	Length
295430	1	22.5 cm (9")	295481	1	22.5 cm (9")
295431	1	30.0 cm (12")	295482	1	30.0 cm (12")
295432	1	45.0 cm (18")	295483	1	45.0 cm (18")
295433	1	60.0 cm (24")			

Switch To Starter Cables

Black

- Switch to starter spade
- 37/0.71 mm
- 16 mm<sup>2</sup> copper cable
- PVC insulated



Part No	Qty	Length
295460	1	22.5 cm (9")
295561	1	30.0 cm (12")
295562	1	45.0 cm (18")
295463	1	60.0 cm (24")
295464	1	76.0 cm (30")
295465	1	91.5 cm (36")

Cable Ties - Coloured

General Use

- High grade nylon 6.6



Part No	Qty	Length	Width	Colour
245313	200	200 mm	4.8 mm	Red
245314	200	200 mm	4.8 mm	Blue
245315	200	200 mm	4.8 mm	Yellow
245316	200	200 mm	4.8 mm	Green
245317	200	200 mm	4.8 mm	Brown

Assorted Pack

High grade nylon 6.6  
**Sizes:**  
 100 x 2.5 mm  
 140 x 3.6 mm  
 200, 295, 370 x 4.8 mm  
 370 x 7.6 mm



Part No	Qty
245201	200

Assorted Pack

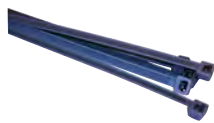
Red, Blue, Yellow, Green & Brown

Part No	Qty
245205	100

Cable Ties - Silver

General Use

- High grade nylon 6.6



Part No	Qty	Length	Width
245509	100	295 mm	4.8 mm
245529	500	295 mm	4.8 mm

Cable Tie Dispenser Box **CLIXT**

Complete with Cable Ties

**Black Ties:**  
 2.5 x 100mm (200)  
 3.6 x 140mm (200)  
 4.8 x 200mm (100)  
 4.8 x 300mm (100)  
 4.8 x 370mm (100)  
 7.6 x 370mm (100)  
**Silver Ties:**  
 4.8 x 300mm (100)  
**Assorted Colours:**  
 4.8 x 200mm (100)



Part No	Qty
110301	1000

Cable Ties - Black

General Use

- High grade nylon 6.6
  - Black
- \*Bonus pack



Part No	Qty	Length	Width
245501	100	100 mm	2.5 mm
245521	1000*	100 mm	2.5 mm
245502	100	140 mm	3.6 mm
245522	1000*	140 mm	3.6 mm
245503	100	200 mm	4.8 mm
245523	1000*	200 mm	4.8 mm
245504	100	295 mm	4.8 mm
245524	500*	295 mm	4.8 mm
245505	100	370 mm	4.8 mm
245525	500*	370 mm	4.8 mm
245506	100	370 mm	7.6 mm
245526	250*	370 mm	7.6 mm
245204	100	710 mm	9.0 mm

Cable Ties - White

General Use

- High grade nylon 6.6



Part No	Qty	Length	Width
245511	100	100 mm	2.5 mm
245621	1000	100 mm	2.5 mm
245512	100	140 mm	3.6 mm
245622	1000	140 mm	3.6 mm
245513	100	200 mm	4.8 mm
245623	1000	200 mm	4.8 mm
245514	100	295 mm	4.8 mm
245624	500	295 mm	4.8 mm
245515	100	370 mm	4.8 mm
245625	500	370 mm	4.8 mm
245516	100	370 mm	7.6 mm
245517	100	710 mm	9.0 mm

Cable Ties - Silver

- High grade nylon 6.6



Part No	Qty	Length	Width	Ref
245322	100	300 mm	4.8 mm	T50I
245318	100	385 mm	4.8 mm	T50L
245518	250	385 mm	4.8 mm	T50L

Cable Ties - Black

HellermannTyton

- High grade nylon 6.6



Part No	Qty	Length	Width	Ref
245187	200	100 mm	2.5 mm	T18R
245580	100	200 mm	2.5 mm	T18L
245189	200	150 mm	3.6 mm	T30R
245208	200	200 mm	3.6 mm	T30L
245582	100	290 mm	3.6 mm	T30LL
245304	200	115 mm	4.8 mm	LK2
245191	200	200 mm	4.8 mm	T50R
245312	500	200 mm	4.8 mm	T50R
245202	1000	200 mm	4.8 mm	T50R
245584	100	250 mm	4.8 mm	T50M
245310	100	275 mm	4.8 mm	LK2A
245203	1000	300 mm	4.8 mm	T50I
245206	500	300 mm	4.8 mm	T50I
245302	100	385 mm	4.8 mm	T50L
245207	300	385 mm	4.8 mm	T50L
245210	500	385 mm	4.8 mm	T50L
245193	100	300 mm	7.6 mm	T120I
245195	100	385 mm	7.6 mm	T120R
245218	100	465 mm	7.6 mm	T120M
245306	50	540 mm	13.0 mm	LK5

Cable Ties - White

- High grade nylon 6.6



Part No	Qty	Length	Width	Ref
245186	200	100 mm	2.5 mm	T18R
245570	100	200 mm	2.5 mm	T18L
245188	200	150 mm	3.6 mm	T30R
245209	200	200 mm	3.6 mm	T30L
245572	100	290 mm	3.6 mm	T30LL
245303	200	120 mm	4.8 mm	T50I
245190	200	200 mm	4.8 mm	T50R
245311	500	200 mm	4.8 mm	T50R
245309	100	270 mm	4.8 mm	LK2A
245185	100	385 mm	4.8 mm	T50L
245574	100	250 mm	4.8 mm	T50M
245192	100	300 mm	7.6 mm	T120I
245194	100	380 mm	7.6 mm	T120R
245219	100	465 mm	7.6 mm	T120M
245305	50	540 mm	13.0 mm	LK5

**Cable Ties - Black**  
**Low Profile**



- For use in confined spaces i.e. gaiter kits

Part No	Qty	Length	Width	Ref
245222	50	350 mm	9.0 mm	LOK350

**Cable Ties - Black**  
**Panel Fixing**



- For holding wires to panels
- Fits 8 mm diameter hole

Part No	Qty	Length	Width	Ref
245231	100	215 mm	4.6 mm	RT50RSF

**Cable Ties - Black**  
**Releasable**



**Speedy Ties**



- Re-useable quick release tie
- High grade nylon 6.6

Part No	Qty	Length	Width	Ref
245241	100	145 mm	7.5 mm	REL140
245242	100	250 mm	7.5 mm	REL250

Part No	Qty	Length	Width
245245	2	740 mm	13.0 mm

**Cable Ties - Dark Blue**  
**Foodsafe (Metal Content)**



- Designed for use in the food and pharmaceutical industries
- Unique blue colour for easy visual detection
- Magnetic detectable
- Greatly reduces risk of contamination
- HF & RoHS approved

Part No	Qty	Length	Width	Ref
295521	100	100 mm	2.5 mm	MCT18R
295523	100	150 mm	3.6 mm	MCT30R
295525	100	200 mm	4.8 mm	MCT50R
295509	100	390 mm	4.8 mm	MCT50L
295527	100	380 mm	7.6 mm	MCT120R

**Cable Ties**  
**Stainless Steel**



- Provides secure fixing
- Ideal for use with CV joint boots

**Metal Ties**



- For CV boots & drive shafts

Part No	Qty	Length	Width	Part No	Qty	Size
245531	50	210 mm	4.6 mm	245251	10	25 - 50 mm
245532	50	360 mm	4.6 mm	245252	10	40 - 110 mm

**Cable Tie Bases**  
**Plastic Screw On**



- White

Part No	Qty	Tie width up to
245198	50	4.8 mm

**Cable Tie Bases**  
**Plastic Self Adhesive**



- White

Part No	Qty	Size	Colour
245196	50	3.5 mm	White
245226	50	3.5 mm	Black
245197	50	4.7 mm	White
245228	50	4.7 mm	Black

**Metal Chassis Clips**



- Spring steel
- Zinc plated
- 6 mm cable grip

Part No	Qty	Length
255208	50	40 mm

**Cable Clips**  
**Self Adhesive Nylon**



- Natural

Part No	Qty	Cable Diameter
255198	100	6.0 mm
255199	50	11.5 mm
255200	25	16.0 mm

**Assorted Pack**

- Sizes:**  
6 mm  
11.5 mm  
16.0 mm



Part No	Qty
110202	50

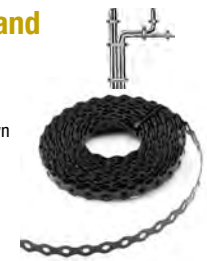
**Cable Tie Bases**  
**Foodsafe (Metal Content)**



- Dark Blue
- Designed for use in the food and pharmaceutical industries
- Unique blue colour for easy visual detection
- Magnetic detectable
- Greatly reduces risk of contamination
- HF & RoHS approved

Part No	Qty	Size
245234	50	3.5 mm
245236	50	4.7 mm

**All Round Fixing Band**



- Pre-drilled holes along length for minimum wastage
- Can be bolted or screwed down to any surface

Part No	Qty	Colour
245260	10 m	Black
245265	10 m	Galvanised

**Cable Clips**  
**Self Adhesive Metal**



- White acrylic coated mild steel

Part No	Qty	Cable Diameter
255292	50	6 mm
255293	50	8 mm
255294	50	12 mm
255285	50	16 mm

**Assorted Pack**

- Sizes:**  
6 mm  
8 mm  
12 mm (cable diameter)



Part No	Qty
110139	50

**P-Clips**  
Adjustable - Nylon

- Natural



Part No	Qty	Cable Diameter
255284	50	4.8 - 6.4 mm
255295	50	6.4 - 9.5 mm
255296	50	9.5 - 14.3 mm
255297	50	14.3 - 22.2 mm
255298	50	22.2 - 30.2 mm

**Assorted Pack**

Sizes:  
6.4 - 9.5 mm  
9.5 - 14.3 mm  
14.3 - 22.2 mm  
22.2 - 30.2 mm (cable diameter)



Part No	Qty
110203	40

**P-Clips**  
Nylon

- Black



Part No	Qty	Cable Diameter
255288	100	5.0 mm
255289	100	6.4 mm
255290	100	9.0 mm
255291	100	12.0 mm

**Assorted Pack**

Sizes:  
5.0 mm  
6.4 mm  
9.0 mm  
12.0 mm (cable diameter)



Part No	Qty
110100	100

**P-Clips**  
Rubber Lined

- EPDM rubber
- Zinc plated mild steel



**Blanking Grommets**  
Rubber



Part No	Qty	Cable Diameter
255299	50	6 mm
255300	50	8 mm
255301	50	10 mm
255302	50	13 mm
255303	50	16 mm
255304	25	21 mm
255307	25	25 mm
255305	25	29 mm
255306	25	35 mm

**Assorted Pack**

Sizes:  
6 mm  
8 mm  
10 mm  
13 mm  
16 mm  
21 mm  
29 mm  
35 mm (cable diameter)



Part No	Qty
110152	50

**Assorted Pack**

Sizes:  
8.0 mm  
9.5 mm  
12.5 mm  
16.3 mm  
19.0 mm  
25.4 mm



Part No	Qty
110103	120

**Wiring Grommets**  
Rubber



Part No	Qty	Hole Size	Cable Diameter
295121	200	6.4 mm	4.75 mm
295122	200	9.5 mm	6.4 mm
295123	150	9.5 mm	8.0 mm
295124	150	12.5 mm	9.5 mm
295125	100	12.5 mm	11.0 mm
295126	100	16.0 mm	12.5 mm

**Assorted Pack**

Sizes:  
6.4 x 4.75 mm  
9.5 x 6.4, 8.0 mm  
12.5 x 9.5, 11.0 mm  
16.0 x 12.5 mm (hole x cable)



Part No	Qty
110104	120

**Rubber Grommets**  
Blanking & Wiring

Blanking:  
8, 9.5, 12.5, 16.3,  
19, 25.4 mm  
Wiring (Cable):  
6.4 x 4.75 mm  
9.5 x 6.4, 8 mm  
12.5 x 9.5, 11 mm  
16 x 12.5 mm



Part No	Qty
105144	240

# ADVANCED ADDITIVES AT TAKEAWAY PRICES

FIXT

Mini Blade Fuses



Part No	Qty	Colour	Amperage
235271	25	Grey	2 amp
235272	25	Violet	3 amp
235273	25	Pink	4 amp
235274	25	Beige	5 amp
235275	25	Brown	7.5 amp
235276	25	Red	10 amp
235100	1000	Red	10 amp
235277	25	Blue	15 amp
235102	1000	Blue	15 amp
235278	25	Yellow	20 amp
235104	1000	Yellow	20 amp
235279	25	Clear	25 amp
235280	25	Green	30 amp

Assorted Pack

Amperages:  
2, 3, 4, 5, 7.5, 10, 15,  
20, 25, 30 amp



Part No	Qty
105280	100

Mini Blade Fuses

Low Profile



Part No	Qty	Colour	Amperage
235380	25	Violet	3 amp
235381	25	Pink	4 amp
235382	25	Beige	5 amp
235383	25	Brown	7.5 amp
235384	25	Red	10 amp
235385	25	Blue	15 amp
235386	25	Yellow	20 amp
235387	25	Clear	25 amp
235388	25	Green	30 amp

Assorted Pack

Amperages:  
3, 4, 5, 7.5, 10, 15, 20, 25, 30 amp



Part No	Qty
105282	150



Standard Blade Fuses

\*Bonus pack



Part No	Qty	Colour	Amperage
235281	50	Grey	2 amp
235282	50	Violet	3 amp
235283	50	Pink	4 amp
235284	50	Beige	5 amp
235285	50	Brown	7.5 amp
235286	50	Red	10 amp
235106	1000*	Red	10 amp
235287	50	Blue	15 amp
235108	1000*	Blue	15 amp
235288	50	Yellow	20 amp

Part No	Qty	Colour	Amperage
235110	1000*	Yellow	20 amp
235289	50	Clear	25 amp
235290	50	Green	30 amp
235291	50	Amber	40 amp

Assorted Pack

Amperages: 2, 3, 4, 5, 7.5, 10, 15,  
20, 25, 30 amp



Part No	Qty
105167	80

Mega Fuses

Suits Mega Fuse Holder,  
Part number: 235635



Part No	Qty	Colour	Amperage
235640	10	Yellow	100 amp
235641	10	Green	125 amp
235642	10	Orange	150 amp
235643	10	White	175 amp
235644	10	Blue	200 amp
235645	10	Beige	225 amp
235646	10	Pink	250 amp
235647	10	Grey	300 amp
235648	10	Black	400 amp
235649	10	Brown	500 amp

MINI® Blade Fuses



Part No	Qty	Colour	Amperage
235324	25	Grey	2 amp
235325	25	Violet	3 amp
235321	25	Pink	4 amp
235326	25	Beige	5 amp
235327	25	Brown	7.5 amp
235328	25	Red	10 amp
235329	25	Blue	15 amp
235330	25	Yellow	20 amp
235331	25	Clear	25 amp
235332	25	Green	30 amp

Assorted Pack

Amperages:  
2, 3, 4, 5, 7.5, 10, 15, 20,  
25, 30 amp



Part No	Qty
105190	100

MAXI™ Blade Fuses



Part No	Qty	Colour	Amperage
235571	10	Yellow	20 amp
235572	10	Green	30 amp
235573	10	Amber	40 amp
235574	10	Red	50 amp
235575	10	Blue	60 amp
235576	10	Tan	70 amp
235577	10	Natural	80 amp

Littelfuse® MEGA Fuses



• For heavy duty applications

Part No	Qty	Amperage
235620	10	250 amp
235630	10	500 amp

ATO® Blade Fuses



• Standard size blade fuses

Part No	Qty	Colour	Amperage
235311	50	Grey	2 amp
235312	50	Violet	3 amp
235313	50	Pink	4 amp
235314	50	Beige	5 amp
235315	50	Brown	7.5 amp
235316	50	Red	10 amp
235416	100	Red	10 amp
235317	50	Blue	15 amp
235417	100	Blue	15 amp
235318	50	Yellow	20 amp
235319	50	Clear	25 amp
235320	50	Green	30 amp
235307	50	Amber	40 amp

Assorted Pack

Standard size blade fuses  
Amperages:  
2, 3, 4, 5, 7.5, 10, 15,  
20, 25, 30 amp



Part No	Qty
105163	80

**PAL™ Auto Fuses Male**

- Slow blow fuses (Japanese)

Part No	Qty	Colour	Amperage
235340	5	Pink	30 amp
235341	5	Green	40 amp
235591	5	Red	50 amp
235342	5	Yellow	60 amp
235343	5	Black	80 amp
235592	5	Blue	100 amp

**Littelfuse® JCASE™ Auto Fuses Standard**

The JCASE is a cartridge style fuse with female terminal design, providing both increased time delay & low voltage drop to protect high current circuits & handle inrush currents

Part No	Qty	Colour	Amperage
235661	3	Blue	20 amp
235662	3	Natural	25 amp
235663	3	Pink	30 amp
235664	3	Green	40 amp
235665	3	Red	50 amp
235666	3	Yellow	60 amp

**JCASE™ Auto Fuses Low Profile**

The JCASE is a cartridge style fuse with female terminal design, providing both increased time delay & low voltage drop to protect high current circuits & handle inrush currents

Part No	Qty	Colour	Amperage
235671	3	Blue	20 amp
235672	3	Natural	25 amp
235673	3	Pink	30 amp
235674	3	Green	40 amp
235675	3	Red	50 amp
235676	3	Yellow	60 amp

**Torpedo Fuses**

Part No	Qty	Amperage
235248	100	5 amp
235249	100	8 amp
235250	100	16 amp
235251	100	25 amp
235261	100	40 amp

**Assorted Box**

Amperages: 5, 8, 16, 25 amp

Part No	Qty
105162	200

**Auto Fuses Torpedo & Glass**

Torpedo: 5, 8, 16, 25 amp  
Glass: 2, 5, 10, 15, 25, 35, 50 amp

Part No	Qty
105265	480

**Domestic Plug Mains Fuses**

Part No	Qty	Amperage
235322	25	3 amp
235323	25	5 amp
235265	50	13 amp

**Assorted Pack**

Amperages: 3, 5, 13 amp

Part No	Qty
110266	100

**Glass Auto Fuses**

Part No	Qty	Amperage
235241	100	2 amp
235242	100	5 amp
235243	100	10 amp
235244	100	15 amp
235235	100	20 amp
235245	100	25 amp
235246	100	35 amp
235247	100	50 amp

**Assorted Box**

Amperages: 2, 5, 10, 15, 25, 35, 50 amp

Part No	Qty
105161	185

**Glass & Ceramic Fuse Holders**

Part No	Qty
235257	10

**Blade Fuse Tester & Extractor**

- For standard size ATO & MINI blade fuses

Part No	Qty
235309	1

**Blade Fuse Holders Splashproof**

- For standard size ATO® blade fuses

Part No	Qty	Amperage
235254	10	20 amp
235262	10	30 amp

**Mini Glass 'Radio' Fuses**

Part No	Qty	Amperage
235237	100	1 amp
235239	100	2 amp
235238	100	3 amp
235236	100	5 amp

**Assorted Fuses Auto & Domestic**

Contains: Mini Blade Fuses, Standard (ATO) Blade Fuses, Glass Auto Fuses, Mini Glass 'Radio' Fuses, Torpedo Fuses, Domestic Plug Fuses, Blade Fuse Holders (x 2), Glass & Torpedo Fuse Holders (with terminal ends)

Part No	Qty
105304	324

**Glass & Ceramic Fuse Holders With Terminal Ends**

Part No	Qty
235260	10

**Blade Fuse Holder 'Add-A-Circuit' ATO™ Style**

- Fusetap & holder for installing additional accessories without splicing

Part No	Qty	Amperage
235306	1	10 amp

**Blade Fuse Holders Splashproof**

- For Mini Blade Fuses

Part No	Qty	Amperage
235259	10	20 amp
235258	10	30 amp

**Blade Fuse Holders**



- With orange cables



Part No	Qty	Amperage
235703	10	30 amp

**Blade Fuse Holders**

- For standard size ATO® blade fuses



Part No	Qty
235252	10

**Blade Fuse Holder Add-A-Circuit Style**

- Fusetap & holder for installing additional accessories without splicing



Part No	Qty	Amperage
235710	10	20 amp
235715	10	20 amp

**Blade Fuse Holders For maxi blade fuse**

- 1.5 - 2.5 mm cable



Part No	Qty
235255	10

**Fuse Holder For Mega Fuses**



Part No	Qty
235635	1

**Blade Fuse Holders With Male Side Tabs**

- For standard size ATO® blade fuses



Part No	Qty
235253	10

**Blade Fuse Holders Self Stripping**

- For standard size ATO® blade fuses



Part No	Qty
235308	20

**Blade Fuse Holder Splashproof**



Part No	Qty	Amperage
235704	10	20 amp
235263	10	30 amp

**Blade Fuse Holder For maxi blade fuse**



Part No	Qty
235705	10

**Strip Fuse Block Holders For MIDI fuses**



Part No	Qty
235619	10

**Cable Connectors**

- Male & female ends



Part No	Qty	Type
265251	1 Pair	2 Pin
265252	1 Pair	3 Pin

**Multi-Tester Analogue**

- Complete with 9v battery



Part No	Qty
985552	1 Set

**Circuit Testing Probe**

- Brass
- With 1 m cable & clip



Part No	Qty	Voltage
985227	1	6V - 24V

**Mains Multi-Test Screwdriver 'Terminator 10'**

- Self powered continuity tester



Part No	Qty	Voltage
985228	1	250V

**'Electricians' Screwdriver With pocket clip**

- 1/8" x 2" long



Part No	Qty
985701	6

**Fluorescent Handlamp Heavy Duty**

- Comes with hook
  - 5 m cable
  - 11w fluorescent tube
  - Mains plug
- Replacement bulb - 295319



Part No	Qty
295317	1

**Fluorescent Tubes Single**



Part No	Qty	Voltage	Wattage
295320	3	240v	8w

**Multi-Tester Digital**

- Complete with 9v battery



Part No	Qty
985545	1 Set

**Circuit Testing Screwdriver**

- Length: 110 mm



Part No	Qty	Length	Voltage
985241	1	110 mm	6V - 24V

**Mains Testing Screwdriver**

- Length: 190 mm



Part No	Qty	Length	Voltage
985229	1	190 mm	240V

**LED Handlamp Bulb Converter**

Converts handlamps with standard SBC bulbs into an LED handlamp for increased energy efficiency & a longer life



Part No	Qty
295340	1

**Fluorescent Tube Double**

- Long life
- Suits: 295317



Part No	Qty	Voltage	Wattage
295319	1	240v	11w

**Halogen Bulb**

- 118 mm long
- Fits linear lamps for general & exterior lighting



Part No	Qty	Voltage	Wattage
295358	1	240v	500w

# SIMPLY THE WORLD'S BEST QUALITY LED TORCHES

Developed especially for hard and demanding jobs, they are the first choice for countless tradespeople, electricians and industrial workers.

Efficient, uncomplicated and totally reliable.



THE CONSUMABLES SOLUTION



## LED Torch

### Multi Coloured

- 200 Lumens
- 3 hours run time
- 60 metre beam distance
- 4 LED colours: White, Red, Green & Blue
- Prismatic diffusor for optimum light and colour performance
- Easy-twist colour selection
- Robust, yet lightweight aircraft-grade aluminium housing
- Corrosion, water and dust resistant

**Supplied with:**  
Belt pouch, Wrist-strap and 4 x AAA batteries

Part No	Qty
275452	1



## LED Pen Torch

- 18 Lumens
- 8.5 hours run time
- 25 metre beam distance
- Energy efficient LED light-chip
- Blue Moon Focus System™ delivers a brighter, whiter beam
- Robust, yet lightweight aircraft-grade aluminium housing
- Speed Focus™ enables smooth single-handed beam focusing
- Water and dust resistant

**Supplied with:**  
Handy pocket clip, wrist-strap, belt/storage pouch and 2 x AAA batteries

Part No	Qty
275454	1



## LED Pen Torch Rechargeable

- 120 Lumens
- 4 hours run time
- 100 metre beam distance
- Advanced Focus System (AFS)
- Patented reflector and lens combination for intense distance or near illumination
- Speed Focus®
- Power and Low Power light modes
- USB Connection for recharging
- Water resistant (IPX4)
- Robust metal housing

**Supplied with:**  
Docking/charging station, USB charging cable, Pouch, Rechargeable battery set (3 x AAA NiMH)

Part No	Qty
275456	1





**LED Torch**  
**Rechargeable**

- 220 Lumens
- 5 hours run time
- 180 metre beam distance
- Advanced Focus System (AFS)
- Patented reflector and lens combination for intense distance or near illumination
- Speed Focus® with Fast Lock/Dynamic Switch
- Power and Low Power light modes
- USB connection for recharging
- Water resistant (IPX4)
- Robust metal housing

**Supplied with:**  
Docking/charging station, USB charging cable, Roll protection ring, Pouch, Wrist-strap, Rechargeable battery set



Part No	Qty
275458	1

**LED Head Torch**  
**Lightweight**

- 120 Lumens
- 6 hours run time
- 100 metre beam distance
- Integrated non-dazzle dimmer switch
- Elasticated headband
- Variable dimmer control



Part No	Qty
275450	1

**LED Safety Torch**  
**ATEX Certified**

- 135 lumens
- Operating temp: -20c to +40c
- Waterproof & dustproof
- 30 hours of battery life
- Battery type: 4 x AAA



Part No	Qty
275518	1

**LED Torch**  
**AP Pro-Series**

- 75 lumens
- Engineered aluminium body
- LED Type: CREE
- Battery type: 3 x AAA



Part No	Qty
275503	1

**Compact Head Torch**  
**Rechargeable**

- 200 Lumens
- 2 hours run time
- 120 metre beam distance
- CREE® Power LED with recalibrated reflector lens for optimised illumination
- Advanced Focus System (AFS)
- Patented reflector and lens combination for distance or near illumination
- Speed Focus®
- 90° Tilttable head
- Seamless dimming to low light option
- Detachable over-head band supplied
- Water-resistant (IPX4)
- High wearing due to optimised weight balance



Part No	Qty
275470	1

**LED Head Torch**  
**Rechargeable**

- 180 Lumens
- 5 hours run time
- 120 metre beam distance
- Premium Power LED (white light) & glare-free LED (red light)
- Advanced Focus System (AFS)
- Patented reflector and lens combination for distance or near illumination
- Smart light technology - Power, Low Power & Blink
- Instant focusing - Focus the light with just one twist
- Transport lock - to prevent accidental battery drain
- Lamp head swivels 60°
- Water-resistant (IPX6)



**Supplied with:**  
USB Cable, Pouch, 1 x L-ion rechargeable battery pack

Part No	Qty	Type
275472	1	Torch
275474	1	Helmet Connecting Kit



**LED Performance Torch**

- 100 lumens
- 3 Hour battery life
- IPX4 Splashproof
- 80 Metre beam
- Long life CREE LED (100,00 hours)
- Battery type: 1 x AA



Part No	Qty
275480	1

**LED Performance Torch**

- 225 lumens
- 2 Mode operation: 50% & 100%
- 7 Hour battery life
- IPX4 Splashproof
- 140 Metre beam
- Long life LED (100,00 hours)
- Battery type: 2 x AA



Part No	Qty
275482	1

**LED Torch**

**Anodized Aluminium**

- 55 lumens
- 5.5 hour battery life
- 1 Ultra bright LED
- 80 metre beam
- Long life LED (50,000 hours)
- Battery type: 3 x AAA



Part No	Qty
275484	1

**LED Torch**

**Heavy Duty Rubber**

- 120 lumens
- 10 hours battery life
- 1 ultra bright CREE LED
- Anti-roll head
- IPX4 water resistant



Part No	Qty
275486	1

**LED Spotlight**

**Rechargeable**

- 150 lumens
- 4 hours battery life
- 400 metres beam
- Charging indicator light
- Swivel stand
- Battery type: Rechargeable 3.7V Lith-ion battery with AC/DC & car adaptor



Part No	Qty
275492	1

**LED Headtorch**

- 80 lumens
- 57 metres beam
- 8 hour battery life
- 4 operating modes: 1 LED 100%, 1 LED 50%, 2 red LED, 2 red RED flashing
- Battery type: 3 x AAA



Part No	Qty
275488	1

**LED Headlight**

- White or red light function
- Tilt adjustable bulb section
- Complete with 2 x CR2032 batteries



Part No	Qty
275344	1

**Pocket Worklight**

**COB LED**

- 90 lumens
- 11 hours battery life
- 14 metre beam radius
- Pen shaped portable design
- Pocket/clip for hands free operation
- Battery type: 3x AAA



Part No	Qty
275490	1

**LED Pen Light**

**'Pin Point'**

- Manufactured from aircraft grade aluminium
- Waterproof
- Battery life lasts for over 10 hours of constant running
- Complete with 3 x AAAA batteries



Part No	Qty
275409	1 Set

**LED Flashlight**

**2 x AA Batteries**

- Weather resistant security torch
- Precision engineered aluminium body
- Complete with required batteries



Part No	Qty
275502	1

**LED Flashlight**

**2 x D Batteries**

- Weather resistant security torch
- Precision engineered aluminium body
- Complete with required batteries



Part No	Qty
275510	1

**LED Lantern**

- Weatherproof
- 1 Ultra bright LED
- 78 metre beam
- 12 hour battery life
- 118 lumens
- 996 battery included



Part No	Qty
275334	1

**Industrial Alkaline Batteries**

- Guaranteed performance even in extreme conditions
- Economical bulk packaging



Part No	Qty	Size	Voltage
275291	10	AAA (LR03 / MN2400)	1.5v
275290	10	AA (LR6 / MN1500)	1.5v
275292	12	C (LR14 / MN1400)	1.5v
275293	12	D (LR20 / MN1300)	1.5v
275294	12	9v (6LR / MN1604)	9v

**Industrial Alkaline Batteries**



Part No	Qty	Size	Voltage
275127	20	AAA (LR03 / MN2400)	1.5v
275128	20	AA (LR6 / MN1500)	1.5v
275129	12	C (LR14 / MN1400)	1.5v
275130	12	D (LR20 / MN1300)	1.5v
275131	12	9v (6LR / MN1604)	9v

**Alkaline Batteries**

- The original copper top battery



Part No	Qty	Size	Voltage
275264	4	AAA (LR03 / MN2400)	1.5v
275274	40	AAA (LR03 / MN2400)	1.5v
275263	4	AA (LR6 / MN1500)	1.5v
275273	80	AA (LR6 / MN1500)	1.5v
275262	2	C (LR14 / MN1400)	1.5v
275272	20	C (LR14 / MN1400)	1.5v
275265	1	9v (6LR / MN1604)	9v
275275	10	9v (6LR / MN1604)	9v

**Power Alkaline Batteries**



Part No	Qty	Size	Voltage
275121	4	AAA (LR03 / MN2400)	1.5v
275521	8	AAA (LR03 / MN2400)	1.5v
275621	12	AAA (LR03 / MN2400)	1.5v
275721	24	AAA (LR03 / MN2400)	1.5v
275221	48	AAA (LR03 / MN2400)	1.5v
275122	4	AA (LR6 / MN1500)	1.5v
275522	8	AA (LR6 / MN1500)	1.5v
275622	12	AA (LR6 / MN1500)	1.5v
275722	24	AA (LR6 / MN1500)	1.5v
275222	48	AA (LR6 / MN1500)	1.5v
275822	96	AA (LR6 / MN1500)	1.5v
275123	2	C (LR14 / MN1400)	1.5v
275523	4	C (LR14 / MN1400)	1.5v
275623	8	C (LR14 / MN1400)	1.5v
275223	24	C (LR14 / MN1400)	1.5v
275124	2	D (LR20 / MN1300)	1.5v
275524	4	D (LR20 / MN1300)	1.5v
275624	8	D (LR20 / MN1300)	1.5v
275224	24	D (LR20 / MN1300)	1.5v
275125	1	9v (6LR / MN1604)	9v
275525	2	9v (6LR / MN1604)	9v
275625	8	9v (6LR / MN1604)	9v
275225	12	9v (6LR / MN1604)	9v

**Micro Alkaline Batteries**

- For use in vehicle remotes
- Size AAAA suits 'Pin Point' LED Torch (275409)



Part No	Qty	Size	Voltage
275126	2	N (LR1 / E90)	1.5v
275112	5	A23 (E23A / MN21)	12v
275120	6	AAAA (LR61 / E96)	1.5v
275111	6	A76 (LR44)	1.5v

**Super Zinc Carbon Batteries**



Part No	Qty	Size	Voltage
275251	4	AAA (R03 / HP16)	1.5v
275351	48	AAA (R03 / HP16)	1.5v
275252	4	AA (R6 / HP7)	1.5v
275352	96	AA (R6 / HP7)	1.5v
275253	2	C (R14 / HP11)	1.5v
275353	48	C (R14 / HP11)	1.5v
275254	2	D (R20 / HP2)	1.5v
275354	48	D (R20 / HP2)	1.5v
275255	1	9v (6F22 / PP3)	9v
275355	12	9v (6F22 / PP3)	9v
275250	1	4.5v (3R12 / 1703)	4.5v

**Coin Batteries**

**Lithium**

- For use in vehicle remotes



Part No	Qty	Size	Voltage
275105	5	CR1220	3v
275101	5	CR1616	3v
275106	5	CR1620	3v
275102	5	CR2016	3v
275103	5	CR2025	3v
275104	5	CR2032	3v
275116	6	CR2430	3v

**Assorted Box**

- Lithium Coins: CR1220, CR1616, CR2016, CR2025, CR2032
- Alkaline Buttons: LR44
- Alkaline Cell Batteries: 23A



Part No	Qty
105196	20

**Ultimate Lithium Batteries**

- High performance batteries, ideal for power hungry devices such as games consoles and digital cameras
- Lasts 8 times longer than standard alkaline batteries
- Performs in extreme temperatures



Part No	Qty	Size	Voltage
275107	4	AAA (LR03 / MN2400)	1.5v
275108	4	AA (LR6 / MN1500)	1.5v
275109	1	9v (6LR / MN1604)	9v

**Rechargeable Batteries**

- The worlds No.1 in rechargeable batteries
- Suitable for all standard chargers



Part No	Qty	Size	Voltage
275440	4	AAA (HR03 / 750Ah)	1.2v
275441	4	AA (HR6 / 2100 mAh)	1.2v
275437	2	C (HR14 / 2200 mAh)	1.2v
275438	2	D (HR20 / 2200 mAh)	1.2v
275439	1	9v (HR22 / 150 mAh)	9v

**Universal Charger**

**NiMH / NiCd**

- Fast universal charger for nickel metal hydride (NiMH) & nickel cadmium (NiCd) AA, AAA, C, D & 9v batteries
- LED charging status indicators with automatic switch-off when fully charged (except 9v size batteries)
- Comes with domestic mains adapter



Part No	Qty
275433	1

**Lantern Batteries**



Part No	Qty	Size	Voltage
996	1	996 (4R25 / 1209)	6v
996-02	2	996 (4R25 / 1209)	6v
996-12	12	996 (4R25 / 1209)	6v

### Auto Bulb Dispenser Unit

#### 12 Volt

• 118 Bulbs

#### Contains:

207 (x5), 233 (x5), 239 (x5), 245 (x5), 265 (x5), 380 (x5), 382 (x5), 501 (x5), 504 (x5), 566 (x5), 567 (x5), 581 (x5), 584 (x5), 380W (x5), 382W (x5), 382WA (x5), 433C (x5), 433D (x5), 501A (x5), 921B (x5), 448 (x2), 472 (x5), 499 (x5), 9005 (x2), 9006 (x2), TL224B (x2)



Part No	Qty
740003	1 Set

### Top-up Bulbs for 12V Dispenser

Part No	Qty	Voltage	Wattage	Ref	Image	Part No	Qty	Voltage	Wattage	Ref	Image
741207	10	12v	5w	207		741378	10	12v	21/5w	380W	
741233	10	12v	4w	233		741385	10	12v	21w	382W	
741239	10	12v	5w	239		740384	10	12v	21w	382WA	
741245	10	12v	10w	245		740006	10	12v	6w	433C	
741265	10	12v	10w	265		741022	10	12v	21w	433D	
741380	10	12v	21/5w	380		741502	10	12v	5w	501A	
741382	10	12v	21w	382		741922	10	12v	16w	921B	
741501	10	12v	5w	501		740448	1	12v	55w	448	
741504	10	12v	3w	504		740472	1	12v	60/55w	472	
741566	10	12v	21/4w	566		740499	1	12v	55w	499	
741567	10	12v	21/5w	567		741905	1	12v	60w	9005	
741581	10	12v	21w	581		741906	1	12v	51w	9006	
741584	10	12v	21w	584		740011	1	12v	55w	TL224B	

### Auto Bulb Dispenser Unit

#### 24 Volt

• 108 Bulbs

#### Contains:

149 (x12), 150 (x10), 241 (x10), 246D (x10), 249 (x10), 334 (x10), 346 (x10), 581A (x10), 242 (x5), 433E (x5), 507 (x5), 566A (x5), 466 (x4), 475 (x6), 499A (x6), H11A (x2)



Part No	Qty
740004	1 Set

### Top-up Bulbs for 24V Dispenser

Part No	Qty	Voltage	Wattage	Ref	Image	Part No	Qty	Voltage	Wattage	Ref	Image
741149	10	24v	5w	149		741242	10	24v	5w	242	
741150	10	24v	5w	150		741021	10	24v	21w	433E	
741241	10	24v	21w	241		741507	10	24v	5w	507	
741246	10	24v	10w	246D		741568	10	24v	21/4w	566A	
741249	10	24v	4w	249		740466	1	24v	70w	466	
741334	10	24v	24/6w	334		740475	1	24v	75/70w	475	
741346	10	24v	21w	346		740498	1	24v	70w	499A	
741582	10	24v	21w	581A		741012	1	24v	70w	H11A	



### Auto Bulb Kit

#### 12 Volt - H1 / H7

- In unique plastic storage box with space for storing additional bulbs & fuses

**Contains bulbs:**

448, 449, 207, 501, 581, 566, 239, 233



Part No	Qty	Voltage
740723	Kit of 8	12v

### Auto Bulb Kit

#### 24 Volt - H1 / H7

- In unique plastic storage box with space for storing additional bulbs & fuses

**Contains bulbs:**

499A, 466, 149, 150, 507, 241, 334, 242, 249, 246



Part No	Qty	Voltage
740724	Kit of 10	24v

### Auto Bulb Kit

#### 12 Volt - H4

- In unique plastic storage box with space for storing additional bulbs & fuses

**Contains bulbs:**

472, 382, 207, 380, 239, 233



Part No	Qty	Voltage
740051	Kit of 6	12v

### Auto Bulb Kit

#### 21 Volt - H4

- In unique plastic storage box with space for storing additional bulbs & fuses

**Contains bulbs:**

475, 346, 241, 149, 150



Part No	Qty	Voltage
740052	Kit of 6	24v

### Tungsten Halogen Bulbs

#### 'Xenon' H7 Cap PX26d

- Headlight



Part No	Qty	Voltage	Wattage	Type	Ref
740499	1	12v	55w		499
741499	2	12v	55w	Performance +50%	499HP
740494	1	12v	55w	H/D & Long Life	499XP
740497	1	12v	100w		499HW
740498	1	24v	70w		499A
740495	1	24v	70w	H/D & Long Life	499AXP

### Halogen Bulbs

#### H1 Cap P14.5s

- Headlight (\*for off-road use only)



Part No	Qty	Voltage	Wattage	Type	Ref
740448	1	12v	55w		448
741448	2	12v	55w	Performance +50%	448HP
740449	1	12v	55w	H/D & Long Life	448XP
740481	1	12v	100w*		481
740487	1	12v	130w*		487
740466	1	24v	70w		466
740467	1	24v	70w	H/D & Long Life	466XP
740491	1	24v	100w*		491

### Halogen Bulbs

#### H3 Cap PK22s

- Headlight (\*for off-road use only)



Part No	Qty	Voltage	Wattage	Type	Ref
740453	1	12v	55w		453
740483	1	12v	100w*		483
740489	1	12v	130w*		489
740460	1	24v	70w		460
740461	1	24v	70w	H/D & Long Life	460XP
740493	1	24v	100w*		493
740496	1	24v	130w*		496

### Halogen Bulbs

#### H4 Cap P43t

- Headlight (\*for off-road use only)



Part No	Qty	Voltage	Wattage	Type	Ref
740473	1	12v	100/55w		473
740472	1	12v	60/55w		472
741472	2	12v	60/55w	Performance +50%	472HP
740471	1	12v	60/55w	H/D & Long Life	472XP
740484	1	12v	100/80w*		484
740477	1	12v	130/90w*		477
740475	1	24v	75/70w		475
740476	1	24v	75/70w	H/D & Long Life	475XP
741475	1	24v	100/80w*		475s

**Asymmetric Bulbs**

**UEC P45t**

- Headlight



Part No	Qty	Voltage	Wattage	Ref
740410	1	12v	45/40w	410
740429	1	24v	55/50w	429

**Halogen Bulbs**

**H2 Cap X511**

- Headlight



Part No	Qty	Voltage	Wattage	Ref
740479	1	12v	55w	479
740480	1	24v	70w	480

**Halogen Bulbs**

**H4 Cap P45t**

- Headlight



Part No	Qty	Voltage	Wattage	Ref
740012	1	12v	60/55w	HB12
740024	1	24v	75/70w	HB24

**Halogen Bulb**

**H8 Cap PGJ19-1**

- Headlight



Part No	Qty	Voltage	Wattage	Ref
740008	1	12v	35w	H8

**Halogen Bulbs**

**H9 Cap PGJ19-5**

- Headlight



Part No	Qty	Voltage	Wattage	Ref
740009	1	12v	65w	H9

**Halogen Bulbs**

**H11 Cap PGJ19-2**

- Headlight



Part No	Qty	Voltage	Wattage	Ref
740011	1	12v	55w	H11

**Halogen Bulbs**

**HB3 Right-Angled**

- Headlight



Part No	Qty	Voltage	Wattage	Ref
740905	1	12v	60w	9005

**Halogen Bulbs**

**HB4 Right-Angled**

- Headlight



Part No	Qty	Voltage	Wattage	Ref
740906	1	12v	51w	9006

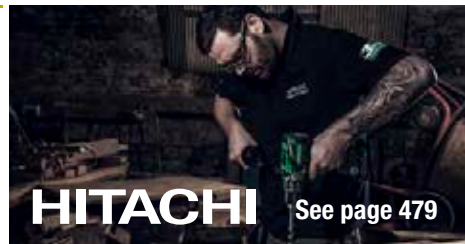
**Halogen Bulbs**

**H27W Cap PG13**

- Headlight



Part No	Qty	Voltage	Wattage	Ref
740880	1	12v	27w	880



**Halogen Bulb**

**H6W MCC BAX9s**

- Sidelight



Part No	Qty	Voltage	Wattage	Ref
740006	1	12v	6w	433C

**Halogen Bulbs**

**H21W MCC BAY9s**

- Sidelight (Miniature halogen)



Part No	Qty	Voltage	Wattage	Ref
740021	1	12v	21w	433D
741021	1	24v	21w	433E

**SCC Bulbs**

**BA15s**

- Sidelight



Part No	Qty	Voltage	Wattage	Ref	Type
740207	10	12v	5w	207	
740206	10	12v	5w	207T	Tubular
740245	10	12v	10w	245	
740244	10	12v	10w	245T	Tubular
740149	10	24v	5w	149	
740248	10	24v	5w	248	Heavy Duty
740246	10	24v	10w	246	
740874	10	28v	7w	874	
740873	10	28v	7w	874T	Tubular

**SBC Bulbs**

**BAY15d (Offset Index)**

- Stop / tail / indicator



Part No	Qty	Voltage	Wattage	Ref	Colour
740380	10	12v	21 / 5w	380	Clear
740379	10	12v	21 / 5w	380R	Red
740376	1	12v	32 / 4w	380C	Clear
740377	10	12v	32 / 4w	380C	Clear
740294	10	24v	21 / 5w	294	Clear
740334	10	24v	24 / 6w	334	Clear

**SCC Bulbs**

**BAU15s (Offset Pin)**

- Indicators



Part No	Qty	Voltage	Wattage	Ref	Colour
740581	10	12v	21w	581	Amber
740582	10	12v	21w	582	Clear
741582	10	24v	21w	581A	Amber

**MCC Bulbs**

**BA9s (8.5 mm Dia)**

- Side / instrument



Part No	Qty	Voltage	Wattage	Ref
740288	10	12v	2w	288
740233	10	12v	4w	233
740289	10	24v	2w	289
740865	10	24v	2.8w	865
740249	10	24v	4w	249

**SBC Bulbs**

**BA15d**

- Stop / tail / indicator



Part No	Qty	Voltage	Wattage	Ref	Type
740335	10	12v	21w	335	
740381	10	12v	21 / 5w	381	
740346	10	24v	21w	346	
740291	10	24v	21w	291	Heavy Duty
740333	10	24v	24w	333	

**SBC Bulbs**

**BAZ15d (Offset Index / Pin)**

- Stop / tail / indicator



Part No	Qty	Voltage	Wattage	Ref
740566	10	12v	21 / 4w	566

**SCC Bulbs**

**BA15s**

- Stop / tail / indicator



Part No	Qty	Colour	Voltage	Wattage	Ref
740382	10	Clear	12v	21w	382
740386	10	Red	12v	21w	382R
740240	10	Clear	24v	15w	240
740241	10	Clear	24v	21w	241
740290	10	Clear	24v	21w	290
740339	10	Clear	24v	24w	339
740345	10	Clear	28v	26w	345
740343	10	Amber	12v	21w	343

**SBC Bulbs**

**BA15d**

- Sidelight



Part No	Qty	Voltage	Wattage	Ref	Type
740209	10	12v	5w	209	
740208	10	12v	5w	209T	Tubular
740150	10	24v	5w	150	
740151	10	24v	5w	150T	Tubular
740247	10	24v	5w	247	Heavy Duty
741246	10	24v	10w	246D	
740875	10	28v	7w	875	
740876	10	28v	7w	875T	Tubular

**MES Bulbs**

**E10 (11 mm Dia)**

- Side / instrument



Part No	Qty	Voltage	Wattage	Ref
740987	10	12v	2.2w	987

**BUS Bulbs**

**BA15d**

- Sidelight



Part No	Qty	Voltage	Wattage	Ref
740810	10	12v	24w	810
740822	10	24v	24w	822

**MCC Bulbs**

**BA9s (9 mm Dia)**

- Side / instrument
- Halogen



Part No	Qty	Voltage	Wattage	Ref
740432	1	12v	5w	433A
740433	1	12v	20w	433

**BA7s Bulbs**

- Panel / indicator



Part No	Qty	Voltage	Wattage	Ref
740281	10	12v	2w	281
740283	10	24v	3w	283

**Wedge Base Bulbs**

**(w2 x 4.6d)**

- Side / instrument



Part No	Qty	Voltage	Wattage	Ref	Colour
740286	10	12v	1.2w	286	Clear
740089	10	12v	1.2w	286A	Amber
740086	10	12v	1.2w	286B	Blue
740088	10	12v	1.2w	286G	Green
740090	10	12v	1.2w	286R	Red
740080	10	12v	2.3w	286X	Clear
740508	10	24v	1.2w	508	Clear

**Wedge Base Bulbs**

**(w2 x 4.6d) 7 mm**

- Side / instrument



Part No	Qty	Voltage	Wattage	Ref
740712	10	12v	1.7w	712

**Wedge Base Bulbs**

**(w2.1 x 9.5d)**

- Side / instrument



Part No	Qty	Voltage	Wattage	Ref	Colour
740512	10	12v	2.6w	512	Clear
740504	10	12v	3w	504	Clear
740501	10	12v	5w	501	Clear
740502	10	12v	5w	501A	Amber
740500	10	12v	5w	501C	Cobalt
740513	10	24v	2w	513	Clear
740505	10	24v	3w	505	Clear
740507	10	24v	5w	507	Clear

**Wedge Base Bulbs**

**(w3 x 16q)**

- Side / instrument



Part No	Qty	Voltage	Wattage	Ref
740378	10	12v	21 / 5w	380W

**Wedge Base Bulbs**

**(w2.5x16q)**

- Side / instrument



Part No	Qty	Voltage	Wattage	Ref	Colour
740157	10	12v	27 / 7w	3157	Clear
740357	10	12v	27 / 7w	3157A	Amber

**Wedge Base Bulbs**

**(w2.5x16d)**

- Side / instrument



Part No	Qty	Voltage	Wattage	Ref
740156	10	12v	27w	3156

**Wedge Base Bulbs**

**(w2.1 x 9.5d) 35 mm**

- Side / instrument



Part No	Qty	Voltage	Wattage	Ref	Colour
740921	10	12v	21w	921	Clear
740923	10	12v	21w	921A	Amber
740922	10	12v	16w	921B	Clear
740924	10	12v	10.2w	921C	Clear

**Wedge Base Bulbs**

**(w3 x 16d)**

- Side / instrument



Part No	Qty	Voltage	Wattage	Ref
740384	10	12v	21w	382WA
740385	10	12v	21w	382W



**Festoon Bulbs**

SV8,5-8. 8 mm Dia x 38 mm



Part No	Qty	Voltage	Wattage	Ref
740256	10	12v	3w	256

**Festoon Bulbs**

SV8,5-8. 11 mm Dia x 38 mm



Part No	Qty	Voltage	Wattage	Ref
740239	10	12v	5w	239
740272	10	12v	10w	272
740242	10	24v	5w	242
740653	10	24v	6w	653

**Festoon Bulbs**

SV8,5-8. 11 mm Dia x 43 mm



Part No	Qty	Voltage	Wattage	Ref
740238	10	12v	5w	239A
740265	10	12v	10w	265
740260	10	24v	5w	260
740274	10	24v	10w	274

**Festoon Bulbs**

SV8,5-8. 15 mm Dia x 43 mm



Part No	Qty	Voltage	Wattage	Ref
740270	10	12v	18w	270
740273	10	12v	21w	273
740275	10	24v	21w	275

**PCB Bulbs**

**BX8.3D**

- Printed circuit



Part No	Qty	Voltage	Wattage	Ref	Base Colour
740082	10	12v	1.2w	286TV	Black
740083	10	12v	1.2w	286TF	Grey
740096	10	12v	2.0w	286TG2	Light Green

**PCB Bulbs**

**B8.5D / BX8.5D**

- Printed circuit



Part No	Qty	Voltage	Wattage	Ref	Base Colour
741286	10	12v	1.2w	286T	Black
740093	10	12v	1.5w	286TB	Beige
740095	10	12v	2.0w	286TG	Green
741508	10	24v	1.2w	508T	Grey

**PCB Bulbs**

**BT8.5D**

- Printed circuit



Part No	Qty	Voltage	Wattage	Ref	Base Colour
740084	10	12v	1.2w	286TC	Black

**PCB Bulbs**

**B85D**

- Printed circuit



Part No	Qty	Voltage	Wattage	Ref	Base Colour
740510	10	24v	1.2w	508TB	Beige

**PCB Hex Base Bulbs**

**BX8.4D**

- Printed circuit



Part No	Qty	Voltage	Wattage	Ref	Base Colour
740085	10	12v	1.2w	286TM2	Black
740092	10	12v	1.5w	286TM	Beige
740094	10	12v	2.0w	286TM3	Light Green

**PC Bulbs**

**HQR**

- Printed circuit



Part No	Qty	Voltage	Wattage	Ref	Base Colour
740087	10	12v	1.2w	286MB5	Black

**PCB Bulbs**

**KW2x4.6D**

- Printed circuit



Part No	Qty	Voltage	Wattage	Ref	Base Colour
740081	10	12v	0.5w	286MTG	Grey
740091	10	12v	1.2w	286MTW	Clear
740511	10	24v	1.2w	508MTW	Clear

**PCB Bulbs**

**EBSR**

- Printed circuit



Part No	Qty	Voltage	Wattage	Ref	Base Colour
742508	10	24v	1.2w	508TVY	Yellow
740509	10	24v	1.2w	508TVB	Brown



# COOL BLUE INTENSE

High-tech halogen lamps, almost in the league of xenon lamps



Xenon look



Up to 4,200 Kelvin



Up to 20% more light

## H4 Cap P43t Halogen Bulbs



## 'Xenon' H7 Cap PX26d Tungsten Halogen Bulbs



Part No	Qty	Voltage	Wattage	Ref
224722	1	12v	60 / 55w	472CBI
224724	2	12v	60 / 55w	472CBI

Part No	Qty	Voltage	Wattage	Ref
224993	1	12v	55w	499CBI
224996	2	12v	55w	499CBI

# NIGHT BREAKER UNLIMITED

headlight lamps offer more performance for the most important lamp types



Up to 110% more light



Up to 40 m longer light beam



Up to 20% whiter light beam

## H1 Cap P14.5s Halogen Bulbs



## H4 Cap P43t Halogen Bulbs



Part No	Qty	Voltage	Wattage	Ref
224661	1	24v	70w	466TS

Part No	Qty	Voltage	Wattage	Ref
224751	1	24v	75 / 70w	475TS

## H3 Cap PK22s Halogen Bulbs



## 'Xenon' H7 Cap PX26d Tungsten Halogen Bulbs



Part No	Qty	Voltage	Wattage	Ref
224601	1	24v	70w	460TS

Part No	Qty	Voltage	Wattage	Ref
224991	1	24v	70w	499ATS

# TRUCKSTAR PRO

the brightest truck light from OSRAM



Heavy duty



Up to 100% more light



Extra lifetime

## H1 Cap P14.5s halogen Bulbs

Part No	Qty	Voltage	Wattage	Ref
224481	1	12v	55w	448NBP
224483	2	12v	55w	448NBP



## H4 Cap P43t Halogen Bulbs

Part No	Qty	Voltage	Wattage	Ref
224721	1	12v	60 / 55w	472NBP
224723	2	12v	60 / 55w	472NBP



## 'Xenon' H7 Cap PX26d Tungsten Halogen Bulbs

Part No	Qty	Voltage	Wattage	Ref
224992	1	12v	55w	499NBP
224994	2	12v	55w	499NBP



## HB3 Right-Angled Halogen Bulbs

Part No	Qty	Voltage	Wattage	Ref
229052	2	12v	60w	9005NBP



## HB4 Right-angled Halogen Bulbs

Part No	Qty	Voltage	Wattage	Ref
229062	2	12v	51w	9006NBP



**Halogen Bulbs**  
H1 Cap P14.5s

- Headlight



Part No	Qty	Voltage	Wattage	Ref	Type
224480	1	12v	55w	448	Xenon
224660	1	24v	70w	466	

**Halogen Bulbs**  
H3 Cap PK22s

- Headlight



Part No	Qty	Voltage	Wattage	Ref
224530	1	12v	55w	453
224600	1	24v	70w	460

**Halogen Bulbs**  
H4 Cap P43t

- Headlight



Part No	Qty	Voltage	Wattage	Ref
224720	1	12v	60 / 55w	472
224750	1	24v	75 / 70w	475

**Tungsten Halogen Bulbs**  
'Xenon' H7 Cap PX26d

- Headlight



Part No	Qty	Voltage	Wattage	Ref
224990	1	12v	55w	499
224995	1	24v	70w	499A

**Halogen Bulbs**  
H11 Cap PGJ19-2

- Headlight



Part No	Qty	Voltage	Wattage	Ref
221100	1	12v	55w	H11

**Halogen Bulb**  
H15 Cap PGJ23t-1

- Headlight



Part No	Qty	Voltage	Wattage	Ref
224300	1	12v	15 / 55w	H15

**Gas Discharge Reflector Bulb**  
PK32d-3

- Headlight



Part No	Qty	Voltage	Wattage	Ref
224311	1	12v	35w	D1R

**Gas Discharge Bulb**  
PK32d-2

- Headlight



Part No	Qty	Voltage	Wattage	Ref
224312	1	12v	35w	D1S

**Gas Discharge Reflector Bulb**  
P32d.3

- Headlight



Part No	Qty	Voltage	Wattage	Ref
224313	1	12v	35w	D2R

**Gas Discharge Bulb**  
P32d

- Headlight



Part No	Qty	Voltage	Wattage	Ref
224314	1	12v	35w	D2S

**SBC Bulbs**  
BAY15d (Offset Index)

- Stop / tail / indicator



Part No	Qty	Voltage	Wattage	Ref
223800	10	12v	21 / 5w	380
222940	10	24v	21 / 5w	294

**SCC Bulbs**  
BAU15s (Offset Pin)

- Indicators: Amber



Part No	Qty	Voltage	Wattage	Ref	Type
225810	10	12v	21w	581	
222900	10	24v	21w	588TS	Truckstar®

**SCC Bulbs**  
BA15s

- Stop / tail / indicator



Part No	Qty	Voltage	Wattage	Ref	Type
223820	10	12v	21w	382	
222410	10	24v	21w	241	
222415	10	24v	21w	241TS	Truckstar®

**SBC Bulbs**  
BAZ15d (Offset Index / Pin)

- Stop / tail / indicator



Part No	Qty	Voltage	Wattage	Ref
225660	10	12v	21 / 4w	566

**MCC Bulbs**  
BA9s (8.5 mm Dia)

- Side / instrument



Part No	Qty	Voltage	Wattage	Ref
222330	10	12v	4w	233

**SCC Bulbs**  
BA15s

- Sidelight



Part No	Qty	Voltage	Wattage	Ref	Type
222070	10	12v	5w	207	
222450	10	12v	10w	245	
221490	10	24v	5w	149	
222485	10	24v	5w	248TS	Truckstar®
222460	10	24v	10w	246	

**SBC Bulbs**  
BA15d

- Sidelight



Part No	Qty	Voltage	Wattage	Ref
221500	10	24v	5w	150

**PCB Bulbs**  
B8.5D / BX8.5D

- Printed circuit
- Universal



Part No	Qty	Voltage	Wattage	Ref	Base Colour
222865	10	12v	1.2w	286T	Black
225085	10	24v	1.2w	508T	Grey

**Wedge Base Bulbs**  
(w2 x 4.6d)  
Side / instrument



**Wedge Base Bulbs**  
(w2.1 x 9.5d)  
Side / instrument



Part No	Qty	Voltage	Wattage	Ref
222860	10	12v	1.2w	286
225080	10	24v	1.2w	508

Part No	Qty	Voltage	Wattage	Ref	Colour
225040	10	12v	3w	504	Clear
225010	10	12v	5w	501	Clear
225011	10	12v	5w	501A	Amber
225050	10	24v	3w	505	Clear
225070	10	24v	5w	507	Clear

**Wedge Base Bulbs**  
(w3 x 16d)



**Wedge Base Bulbs**  
(w3 x 16q)



Part No	Qty	Voltage	Wattage	Ref
223821	10	12v	21w	382W

Part No	Qty	Voltage	Wattage	Ref
223801	10	12v	21 / 5w	380W

**Festoon Bulbs**  
SV8,5-8. 11 mm Dia x 38 mm



**Festoon Bulbs**  
SV8,5-8. 15 mm Dia x 43 mm



Part No	Qty	Voltage	Wattage	Ref
222390	10	12v	5w	239
222720	10	12v	10w	272
222420	10	24v	5w	242

Part No	Qty	Voltage	Wattage	Ref
222730	10	12v	21w	273

**KEEPING YOU IN TRIM**



**Fluorescent Light Starter Switches**



Part No	Qty	Wattage
295305	10	4 - 80w
295306	10	100 - 125w

**Caravan & Trailer Plug**



- 7 Pin
- Metal Body
- 12N System

Part No	Qty	Voltage
295210	1	12v

**Caravan & Trailer Socket**



- 8 Pin
- Metal Body
- 12N System

Part No	Qty	Voltage
295211	1	12v

**In-Line Plugs**  
Low Voltage



Part No	Qty	Amperage	Voltage	Colour
265291	1	16 amp	110v	Yellow
265295	1	32 amp	110v	Yellow
265297	1	16 amp	240v	Blue

**In-Line Sockets**  
Low Voltage



Part No	Qty	Amperage	Voltage	Colour
265292	1	16 amp	110v	Yellow
265296	1	32 amp	110v	Yellow
265298	1	16 amp	240v	Blue

**Toggle Switches & Lights**  
Toggle Switches



Part No	Qty	Amperage	Voltage
295201	10	20 amp	12v

**Illuminated Toggle Switches**



Part No	Qty	Amperage	Voltage
295202	10	20 amp	12v

**Illuminated Rocker Switches**



Part No	Qty	Amperage	Voltage
295203	10	20 amp	12v

**Warning Lights**



Part No	Qty	Colour	Amperage	Voltage
295206	10	Red	20 amp	12v

**On / Off Switch**

- Red LED



Part No	Qty
295204	1

**Assorted Box**

- 12v
- 20 amps

**Contains:**  
Toggle Switches, Illuminated Toggle Switches, Illuminated Rocker Switches, Warning Lights



Part No	Qty
105154	20

**Domestic Plugs**

**Nylon**

- 3 pin



Part No	Qty	Colour	Amperage
265278	10	White	13 amp

**Domestic Plugs**

**Rubber**

- 3 pin



Part No	Qty	Colour	Amperage
265262	10	Black	13 amp
265263	10	White	13 amp

**3-Way Adapter**

**Fused**

- 3 pin



Part No	Qty	Amperage
265284	1	13 amp

**Plug-In Timer Switch**

- 3 pin
- 24 hour, 4 segment timer with manual override



Part No	Qty	Amperage
265285	1	13 amp

**RCD Mains Safety Adapter**

- 3 pin
- Circuit breaker



Part No	Qty	Amperage
265286	1	13 amp

**'Neon' Trailing Socket**

**Nylon - White**

- With 'mains on' light



Part No	Qty	Colour	Amperage	Gangs
265281	1	White	13 amp	2 Gang

Part No	Qty	Colour	Amperage	Gangs
265271	2	Black	13 amp	1 Gang
265264	2	White	13 amp	1 Gang
265272	1	Black	13 amp	2 Gang
265276	1	White	13 amp	2 Gang
265273	1	Black	13 amp	4 Gang
265275	1	White	13 amp	4 Gang

**Extension Lead**

**Nylon - White**

- 3 pin mains plug



Part No	Qty	Length	Amperage	Voltage	Gangs
265201	1	5 m	13 amp	240v	1 Gang
265202	1	15 m	13 amp	240v	1 Gang

**'Neon' Extension Lead**

**Nylon - White**

- 3 pin mains plug



Part No	Qty	Length	Amperage	Voltage	Gangs
265283	1	1 m	13 amp	240v	4 Gang

**Extension Lead**

**Rubber - White**

- 3 pin mains plug



Part No	Qty	Length	Amperage	Voltage	Gangs
265277	1	2 m	13 amp	240v	4 Gang

**'Neon' Extension Lead**

**Nylon - White**

- Nylon socket
- 3 pin mains plug (white)



**Radaflex Extension Lead**

**Rubber - Black**

- Resistant to oil & heat



Part No	Qty	Length	Wattage	Gangs	Part No	Qty	Length	Amperage	Voltage	Gangs
265211	1	4 m	3 kw	4 Gang	265203	1	5 m	13 amp	240v	2 Gang
					265204	1	15 m	13 amp	240v	2 Gang

**Extension Reel**

**3 Pin Mains Plug**

- In enclosed casing
- 3 pin mains plug



Part No	Qty	Length	Amperage	Voltage	Gangs
265294	1	10 m	6 amp	240v	2 Gang
265288	1	9 m	10 amp	240v	3 Gang

**Extension Reel**

**Heavy Duty**

- Ventilated plastic drum
- 3 pin mains plug



Part No	Qty	Length	Amperage	Voltage	Gangs
265289	1	25 m	13 amp	240v	2 Gang

**In-Line Extension Reel**

**Low Voltage**



Part No	Qty	Length	Voltage	Gangs
265293	1	25 m	110v	2 Gang